

**Scott E. Bennett, P.E.**  
**Director**



**Associated General Contractors**

Wednesday, January 22, 2020

**AGC ARKANSAS**



# Changes at the Department



# Arkansas Highway Commission



Keith Gibson

Philip Taldo

Robert Moore  
Vice-Chairman

Tom Schueck  
Chairman

Alec Farmer

# Changes at the Department



**Rex Vines**  
**Assistant Chief Engineer**  
**Operations**



**Cannon Calliott**  
**District One Engineer**



**Jason Hughey**  
**District Eight Engineer**



# E-Construction





# E-Construction



Change Orders

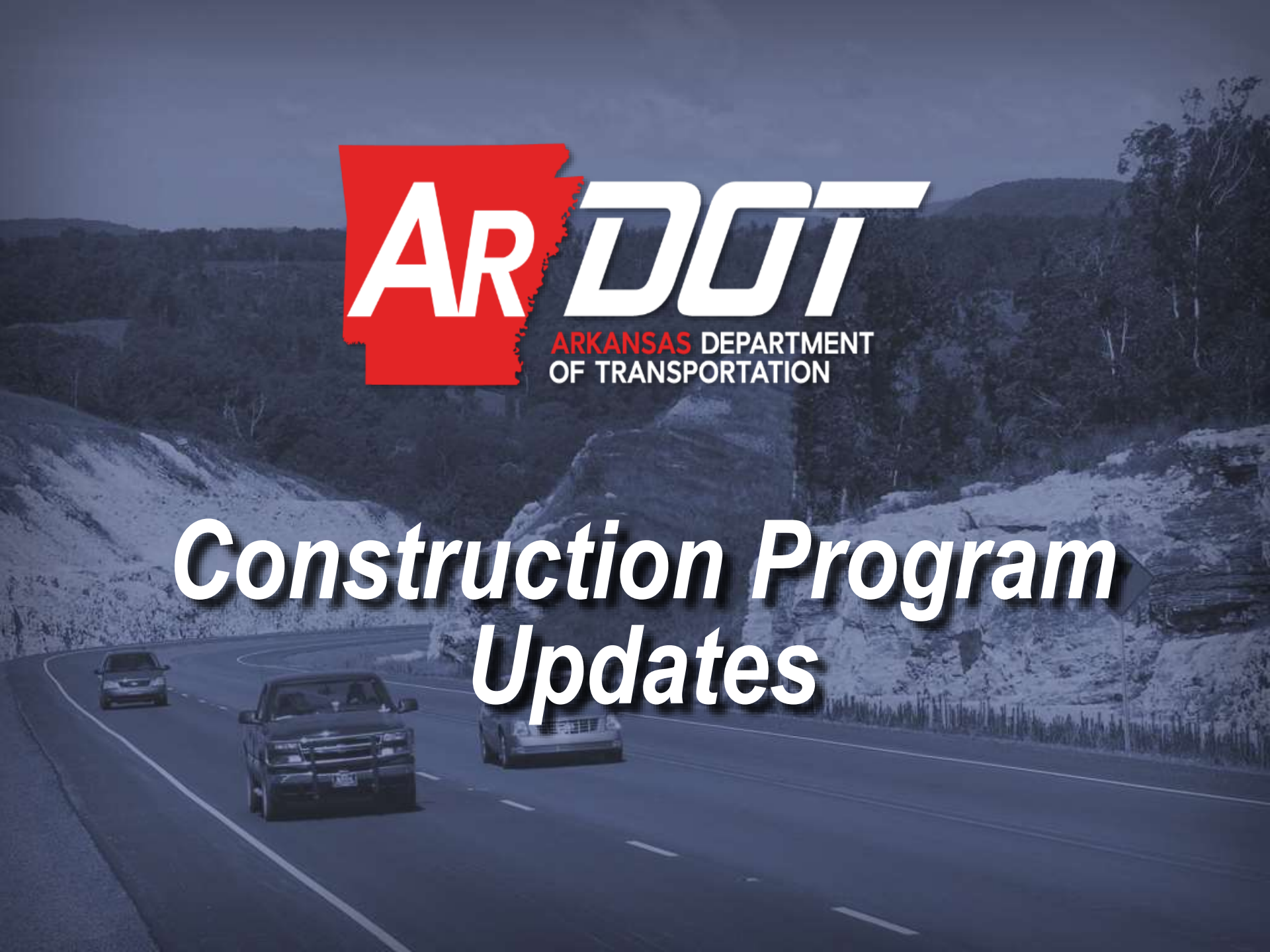
Supplemental Agreements

AASHTOWare Civil Rights & Labor Module

Enhanced Tracking of Documents



# *Construction Program Updates*



# Interstate Rehabilitation Program

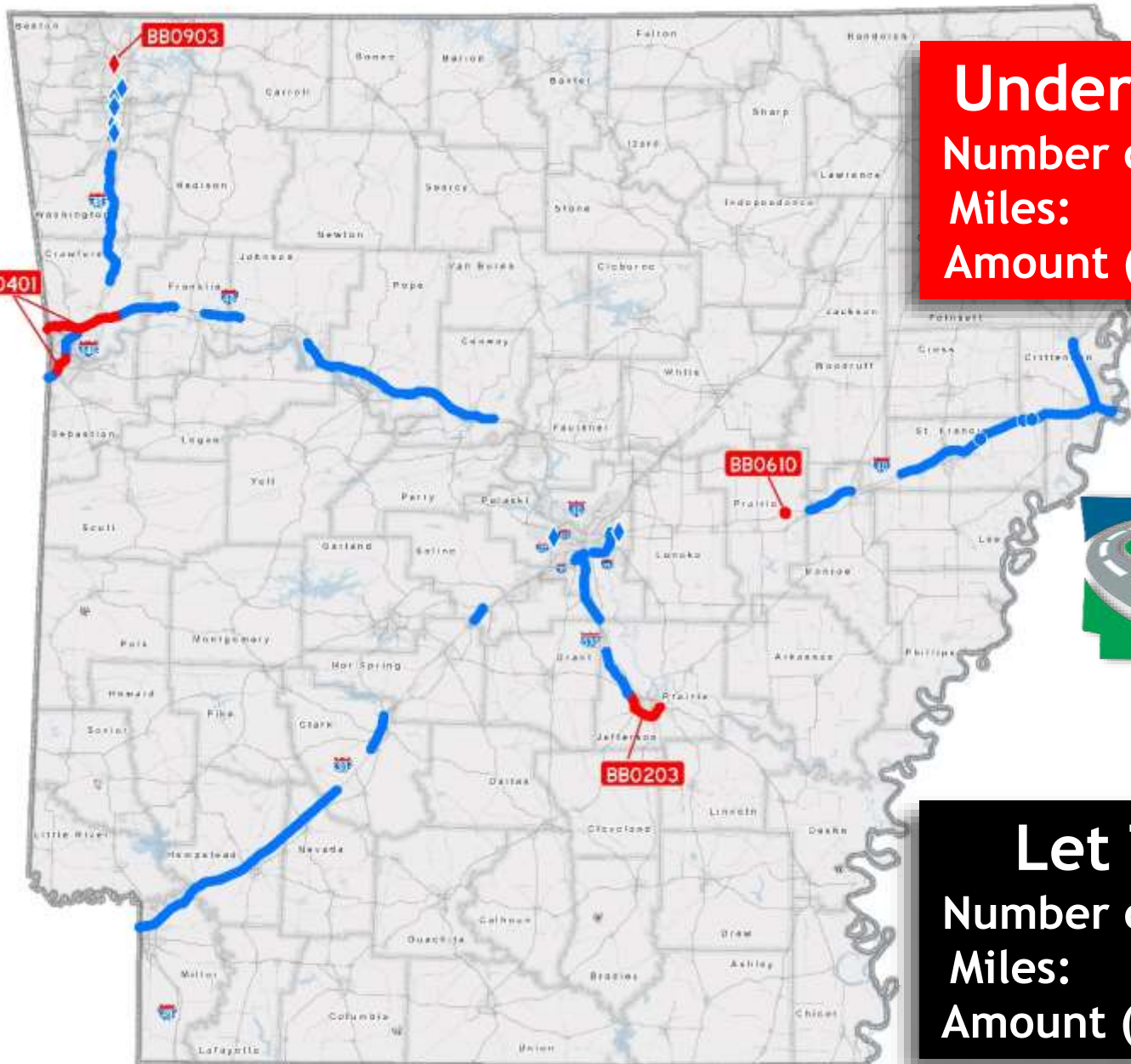


**Completed**

Number of Projects:	48
Miles:	311
Amount (Millions):	\$1,066



# Interstate Rehabilitation Program



## Under Construction

Number of Projects:	4
Miles:	34
Amount (Millions):	\$248



## Let To Contract

Number of Projects:	52
Miles:	345
Amount (Millions):	\$1,314

# Interstate Rehabilitation Program



## Scheduled

Number of Projects:	27
Miles:	160
Amount (Millions):	\$219

## Total Program

Number of Projects:	79
Miles:	504
Amount (Millions):	\$1,533



# Connecting Arkansas Program

2016 2017 2018 2019 2020 2021 2022 2023

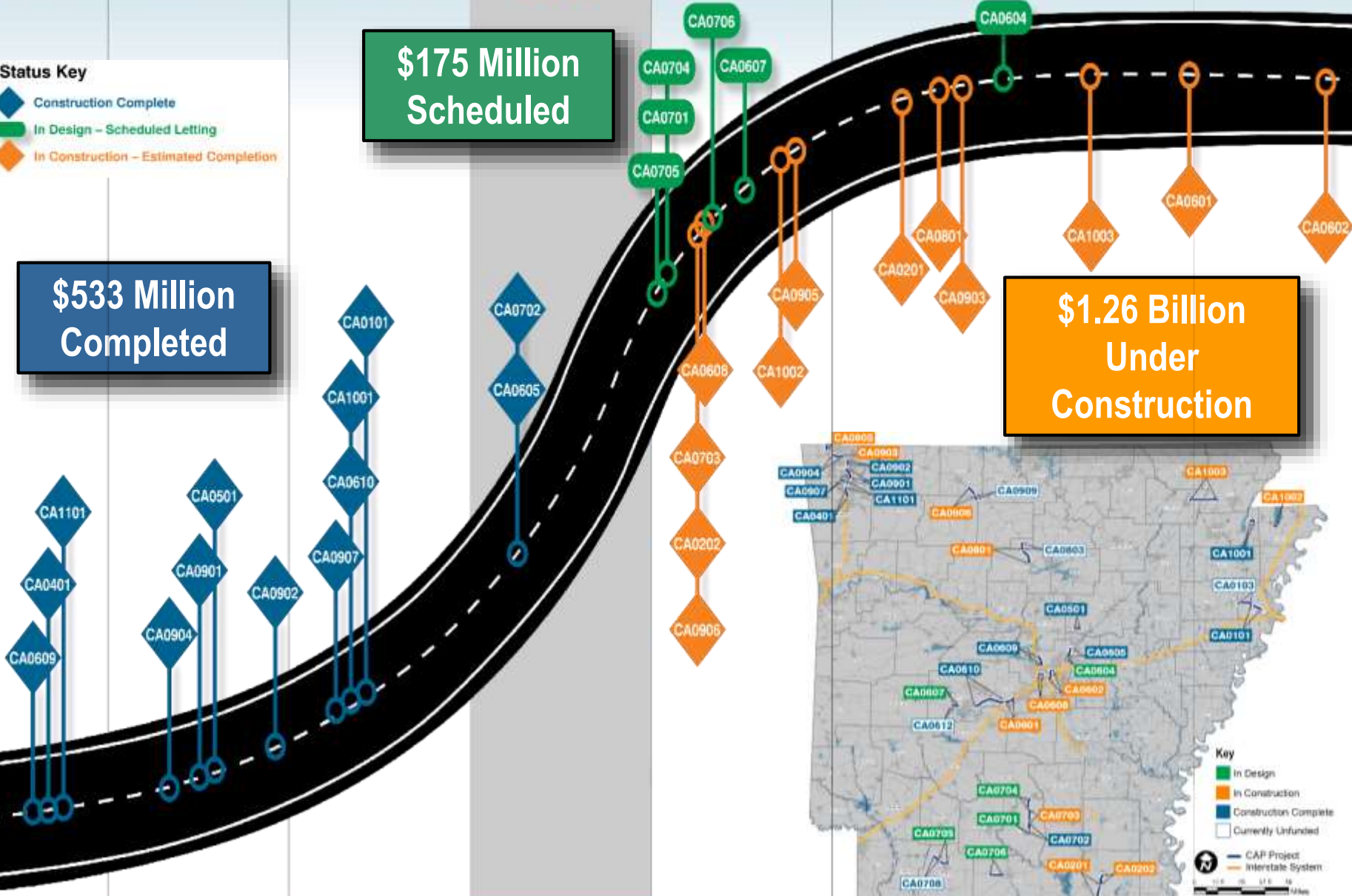
## Status Key

- ◆ Construction Complete
- In Design - Scheduled Letting
- ◇ In Construction - Estimated Completion

**\$175 Million Scheduled**

**\$533 Million Completed**

**\$1.26 Billion Under Construction**







# 2020-2023 *Program*



# 2020 Scheduled

Type Work	Amount (x \$1 M)
Widening / New Location	\$ 259
Pavement Preservation	\$ <b>255</b>
Bridges	\$ 227
Safety	\$ 135
Other	\$ 4
Total	\$ <b>880</b>



# 2020 Pavement Preservation Projects

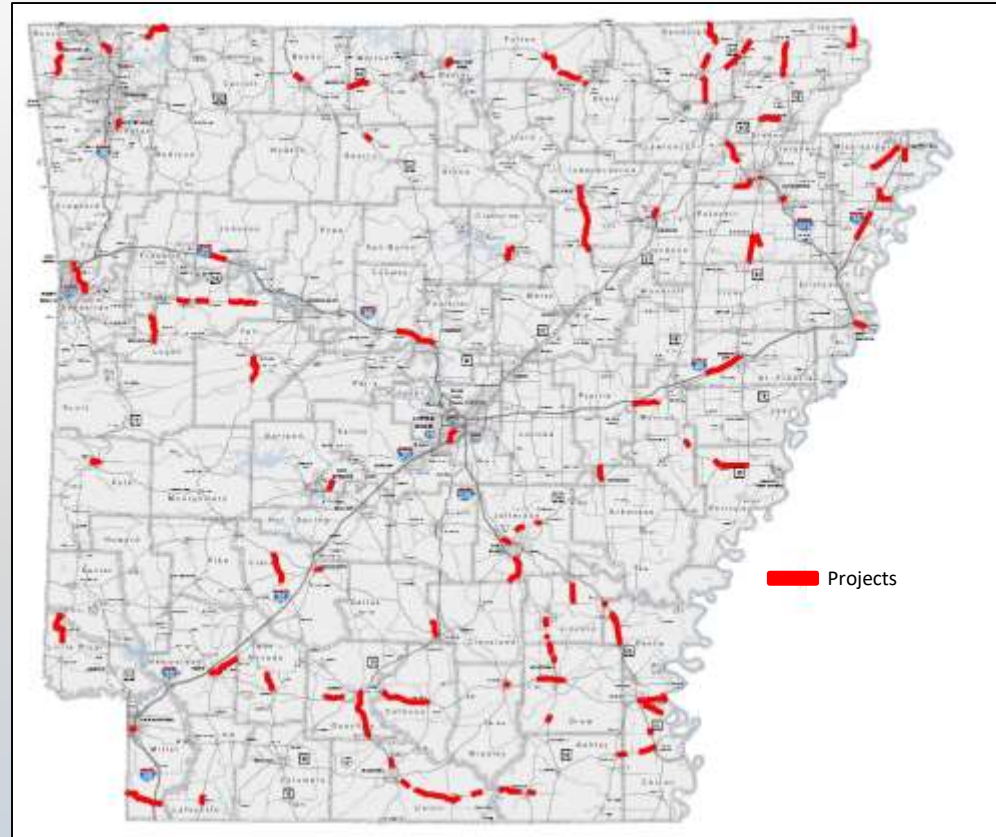
**January – \$27 Million**

**February – \$63 Million**

**April – \$66 Million**

**May – \$40 Million**

**June – \$59 Million**





# 2021 Scheduled

Type Work	Amount (x \$1 M)
Widening / New Location	\$ 212
Pavement Preservation	\$ <b>290</b>
Bridges	\$ <b>171</b>
Safety	\$ 59
Other	\$ 9
Total	\$ <b>741</b>



# 2022 Scheduled

Type Work	Amount (x \$1 M)
Widening / New Location	\$ 108
Pavement Preservation	\$ <b>290</b>
Bridges	\$ <b>72</b>
Safety	\$ 62
Other	\$ 13
Total	\$ <b>545</b>



# 2023 Pavement Preservation

2023 - **\$290** Million







**RENEW** **AR** **HIGHWAYS**

# Funding Updates

# November 3, 2020

## The Ballot Question: Issue 1

**YES**



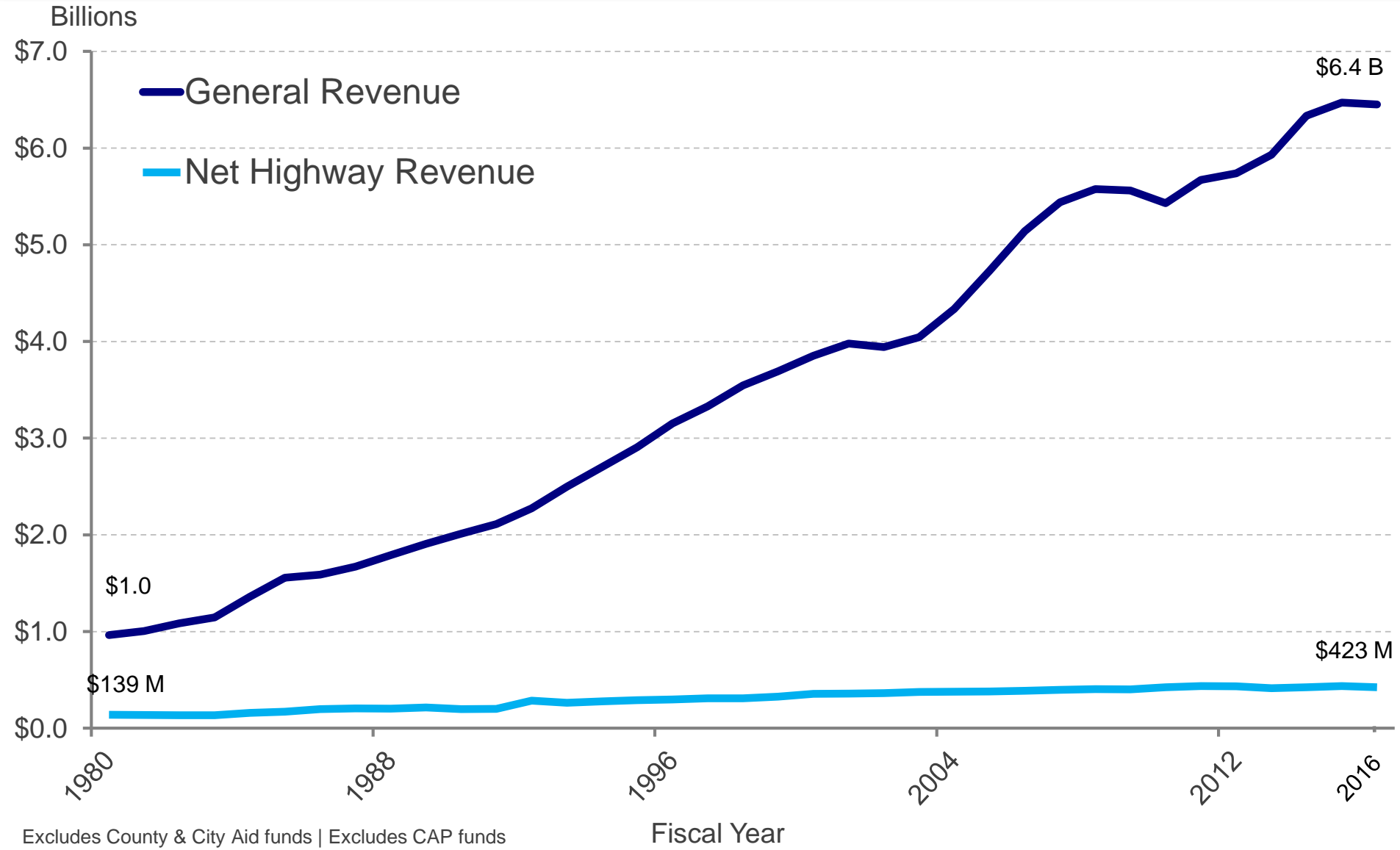
*Funding from current sales tax continues after June 2023*

**NO**



*Funding from current sales tax terminates after June 2023*

# Revenue Trends





# Significant Loss Of Purchasing Power

Item	Description	1993	2015	Percent Change
College Tuition	Average Tuition & Fees at Public 4-year Universities	\$1,908	\$9,145	379%
Healthcare	National Expenditure Per Capita	\$3,402	\$9,523	180%
House	Median New Home Price	\$118,000	\$292,000	147%
Gas	Per Gallon	\$1.08	\$2.56	137%
Beef	Per Pound of Ground Beef	\$1.97	\$4.38	122%
Movie Ticket	Average Ticket Price	\$4.14	\$8.43	104%
Bread	Per Pound of White Bread	\$0.75	\$1.48	98%
Income	National Median Household	\$31,241	\$56,516	81%
Stamp	One First-Class Stamp	\$0.29	\$0.49	51%
Car	Average New Car	\$16,871	\$25,487	51%
Federal Gas Tax	Per Gallon	\$0.18	\$0.18	0%

Sources: Bureau of Labor Statistics, Centers for Medicare & Medicaid Services, College Board, Federal Reserve Bank of St. Louis, Oak Ridge National Laboratory, U.S. Census Bureau, U.S. Energy Information Agency, U.S. Postal Service

# Construction Costs

## *Money Doesn't Go As Far*

### THEN

In 1995, **200 miles** of highway could be overlaid with \$10 million.

### NOW

Using \$10 million today, only **54 miles** of highway can be overlaid.



# The 10-Year Shortfall

- \$9.3 Billion in needs
  - \$4.5 Billion in available revenue
- 
- \$4.8 Billion shortfall





# What's the Right Annual Amount?

Highway Funding Working Group \$400 Million

Arkansas State Legislative Audit \$478 Million

✓ *Governor's Highway Funding Plan* \$300 Million



*“An efficient transportation system is critical for Arkansas’ economy and the quality of life of the state’s residents.”*

– Governor Asa Hutchinson

# The Proposed Plan

## Governor's Long Term Highway Funding Plan

Act 416 of 2019

**\$95 Million**

*(Immediate Funding dedicated to System Preservation)*

Issue 1

**\$205 Million**

*(Funding for System Preservation plus Capital Projects beginning in SFY 2024)*

---

Total to ARDOT

**\$300 Million**



# Governor's Long Term Highway Funding Plan

## Benefits from Additional \$300 Million Per Year

Provide \$8.2 Billion in Economic Activity over 10 Years

Support 3,596 Jobs Each Year\*

Maintain Interstates in a State of Good Repair

Increase Safety Improvements

Implement a Second Connecting Arkansas Program (CAP-2)

Repair/Replace Poor Condition and Posted Bridges over 10 Years

Improve Approximately 7,000 Miles of Non-Interstate Highways over 10 Years

**\*Source:** *"The Economic Impacts of an Annual \$478 Million Increase in Arkansas Highway, Street and Bridge Construction Investment,"* prepared by the American Road & Transportation Builders Association (ARTBA), October 2018; data prorated for \$300 million in additional annual revenue.



# If Issue 1 Passes

Annual Revenue Expected to be Available in SFY 2024

Act 416 of 2019	\$95 Million
Issue 1	\$205 Million
Current Construction Program	\$440 Million

---

**Total Available SFY 2024**      **\$740 Million**



# If Issue 1 Passes

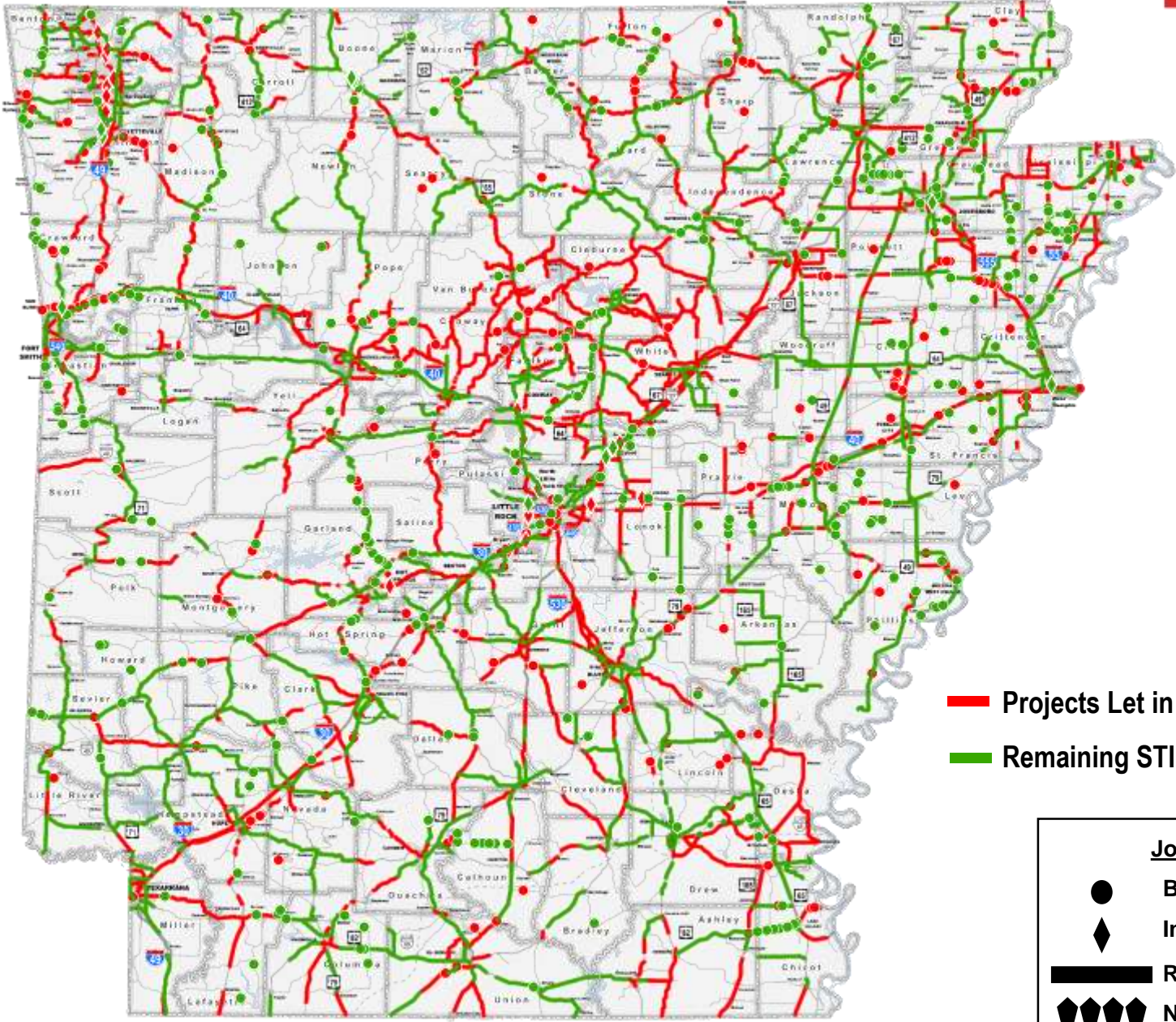


## 10-Year *Renew Arkansas Highways* Program

Pavement Preservation	\$3.0 Billion
Bridge Improvements and Preservation	\$1.1 Billion
Interstate Maintenance	\$1.0 Billion
Safety Improvements	\$0.5 Billion
Capital and Congestion Relief (CAP-2)	\$1.8 Billion
<b>Total</b>	<b>\$7.4 Billion</b>



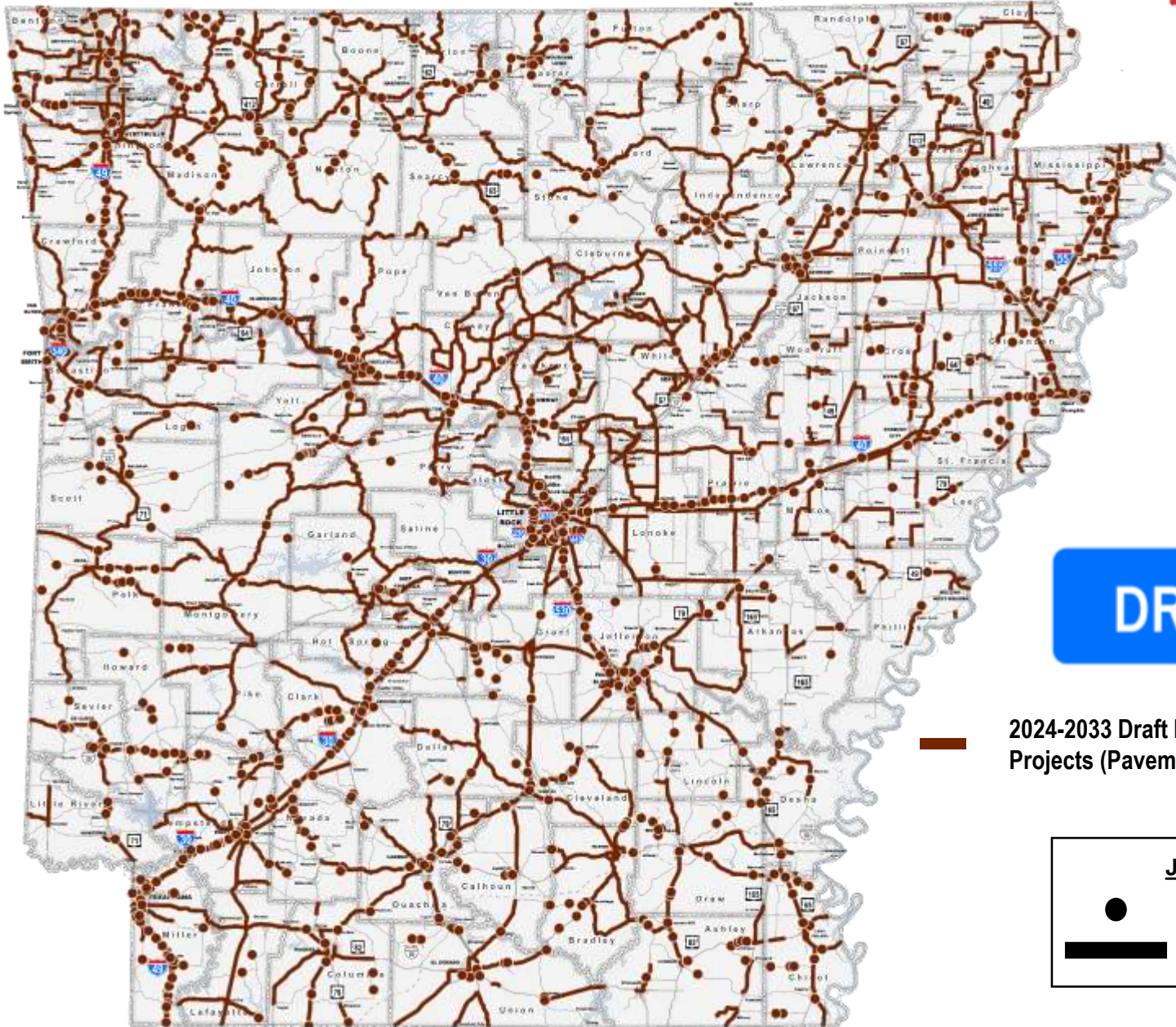
Projects Let In The Past Ten Years and  
Funded Through 2023



- Projects Let in the Past Ten Years
- Remaining STIP Through 2023

Job Type	
●	Bridge
◆	Interchange
▬	Roadway
◆◆◆◆	New Location





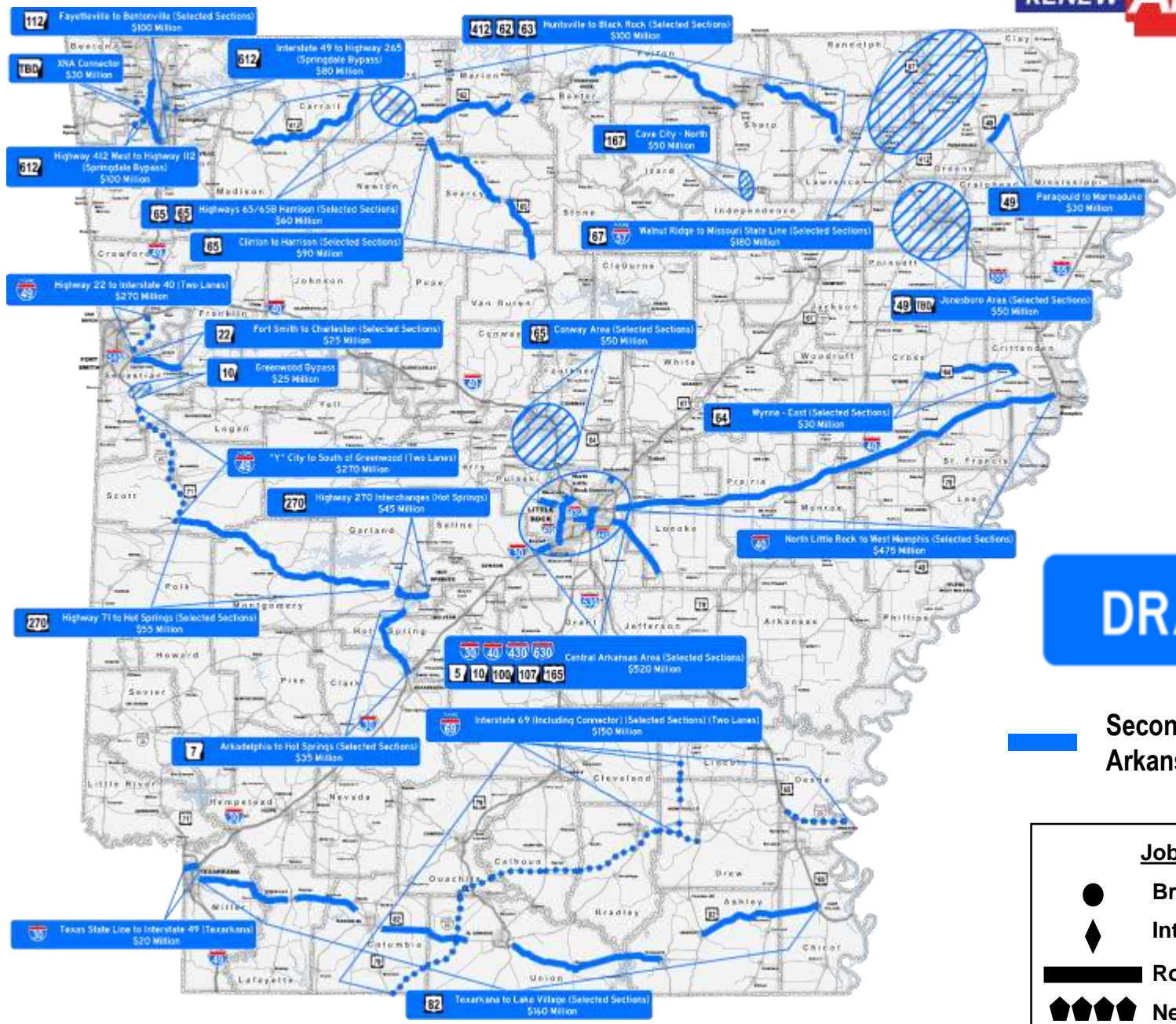
**DRAFT**

— 2024-2033 Draft Program of Preservation Projects (Pavement & Bridges)

Job Type	
●	Bridge
—	Roadway



# Second Connecting Arkansas Program



**DRAFT**

**Second Connecting Arkansas Program**

**Job Type**

- Bridge
- ◆ Interchange
- ▬ Roadway
- ◆◆◆◆ New Location

## Potential Projects

• Second Connecting Arkansas Program	\$ 3.0 Billion
• Economic Development, Partnering & Local Congestion Relief	\$ 0.5 Billion
• ROW Acquisition & Utility Relocation	\$ 0.1 Billion
	<hr/>
<b>20-Year Total</b>	<b>\$ 3.6 Billion</b>



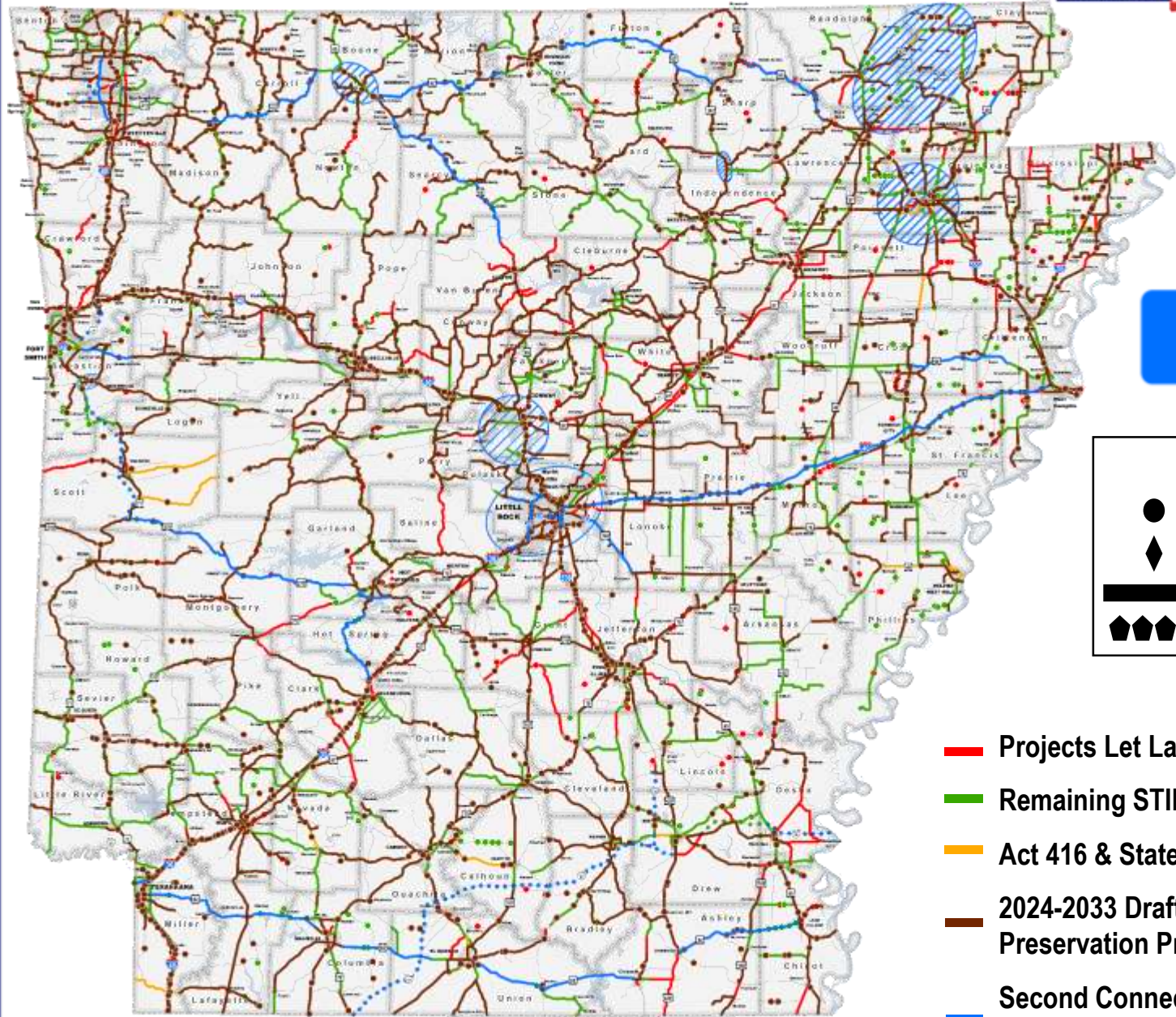


# New Highway Program

**DRAFT**

Job Type

- Bridge
- ◆ Interchange
- ▬ Roadway
- ▮▮▮▮ New Location



- Projects Let Last 10 Years
- Remaining STIP
- Act 416 & State Surplus Revenue
- 2024-2033 Draft Program of Preservation Projects
- Second Connecting Arkansas Program

# If Issue 1 Fails

## Annual Revenue Expected to be Available in SFY 2024 for State Highways

Act 416 of 2019	\$ 95 Million
<del>Proposed Amendment</del>	<del>\$205 Million</del>
Current Construction Program	\$440 Million

**Total Available SFY 2024**      ~~**\$740 Million**~~

***Nearly 30% Less***



Chicot County, Highway 144  
Lake Chicot State Park entrance to the  
Mississippi River Levee



# If Issue 1 Fails

## 10-Year Plan



Ashley County, Highway 160  
6 miles east of Montrose

Pavement Preservation	\$1.0 Billion
Bridge Improvements and Preservation	\$1.1 Billion
Interstate Maintenance	\$1.0 Billion
Safety Improvements	\$0.5 Billion
Capital and Congestion Relief (CAP-2)	\$1.8 Billion



**10-Year Total      \$~~7.35~~ Billion**

# If Issue 1 Fails



## Turnback to Cities

2023 - \$156 Million

2024 - \$113 Million

Nearly a 30% Reduction

## Turnback to Counties

2023 - \$156 Million

2024 - \$113 Million

Nearly a 30% Reduction

RENEW **AR** HIGHWAYS

Unless someone like  
you cares a whole  
awful lot, Nothing is  
going to get better.

**It's not.**

-Dr. Seuss, The Lorax





# It's Your Transportation System...



## YOU Get to Decide



# November 3, 2020